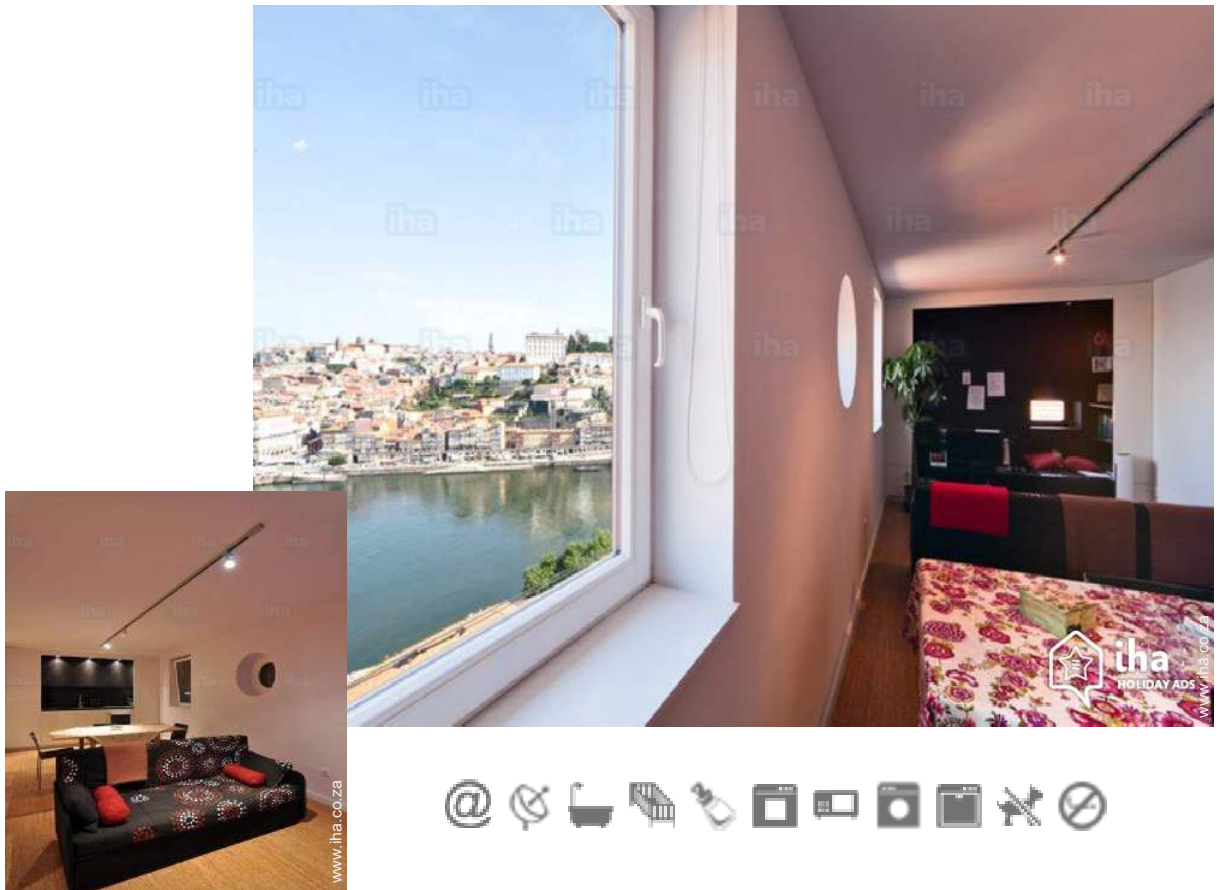


Holiday lettings Green Coast "Casa da Serra do Pilar"

2 rooms, ideal for 4 or 6 persons, we have two cribs for babies. Two separate bedrooms are an undeniable advantage for visitors.



Flat-Apartments 1st floor, separate entrance, in a(an) House 1 floor

Setting : historical, city

Capacity : from 1 to 8 person(s)

Bedroom(s) : 2

Room(s) : 4



Theme breaks
Family Holidays
Discover the cultural heritage

Porto - District of Porto - Norte Region (Portugal)
Portugal

Advert No. 5926

www.iha.co.za



>> HOLIDAY LETTINGS

BOOK DIRECT WITH THE OWNERS

Holiday lettings



Flat-Apartments 1st floor, separate entrance, in a(an) House 1 floor

- **Ideal for all age groups, couples with baby**
- **View** : panoramic, unobscured, river, town, monument, nightlights
- **Setting** : historical, city

" Two separate bedrooms are an undeniable advantage for visitors looking for accommodation that is ideal for 4 people, It should be noted that in addition to 4 adults - We can also accommodate 2 extra adults in a sofa bed (1,40x1,80m) in the living room. Apartment with the best view of the Porto city and the Douro River. The apartment is composed of bright rooms, laid out in a contemporary and designer style. "

Assets

- **baby equipment** :
Baby chair, baby bath, pushchair



the house

Surroundings & location



City



Fishing



Culture

" Apartment with the best view of the Porto city and the Douro River. A splendid view of the river Douro and the city of Porto are the background to this extremely pleasant city apartment located in Vila Nova de Gaia. "

Leisure

- **Leisure activities less than 20 km / 12 miles** :

Pedalo, surfing, golf, boat trips, rollerblade/rollerskate (circuit)

- **Attractions and relaxation** :

Bar/pub, restaurant, park and garden, art gallery, historical site, museum, theatre, local craftshop, cellar and wine tasting

Surroundings

- **Locality** :

Sea/ocean 5km
Sandy beach 5km
River 200m

- **Amenities** :

Town centre 500m
Bus stop / bus station 200m
Tube station 100m
Tramway system 800m
Bus pick up point beach 200m
Bike/mountain bike hire 200m
Scooter/motorbike hire 300m
Breadshop 300m
Local shops 300m
Supermarket 500m
Post office 500m
Bank 300m
Cash point 300m
Chemist 300m
Hospital 1km



WC



T.V.



View

Exterior

- Outside setting :
River



double bed(s)

Interior

- Receive up to :
from 1 to 8 person(s) (6 adults, 2 children)
- Liveable floor area :
70m²
- Interior layout :
4 Room(s), 2 bedroom(s), 1 bathroom, kitchenette
- Sleeps - bed(s) :
1 double bed(s), 1 super king-size bed(s), 1 sofa bed(s) 2 pers, 2 baby cot(s)
- Guest facilities :
T.V., DVD player, cable/satelite, internet access, wifi, Hanging wardrobe, hair dryer, mobile cool air fan, electric heating, Blinds, Double glazed
- Appliances :
Crockery/cuttlery, kitchen utensils, electric coffee maker, electric espresso coffee maker, electric kettle, toaster, juicer, fondue set, electric hobs, oven, micro-wave oven, extractor hood, refridgerator, freezer, dish washer, washing machine, vacuum cleaner, iron, ironing board

Services

- Washing :
Sheets, Towels, Linen, Blanket(s), Quilt(s), Pillows
- House :
Cleaning on departure

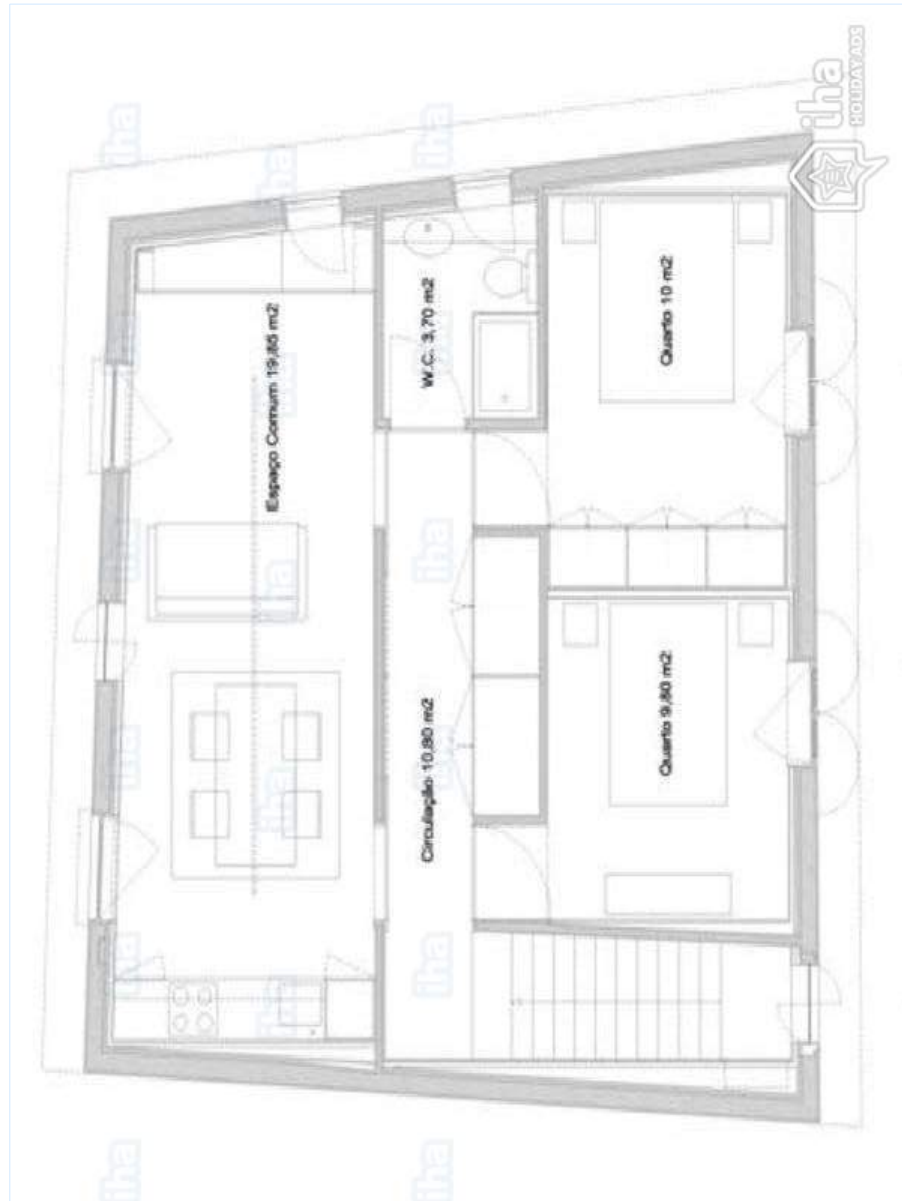
For your guidance

- For your guidance
Children welcome
No pet allowed
Non smoking rental, mobile telephone network coverage
Water : hot/cold
Local vantage supply : 220V / 60Hz



General

Floor plan



www.ihaco.za

Photo album - 1



the house



T.V.



WC



View



General

Holiday lettings
Porto - Green Coast
"Casa da Serra do Pilar"

6

[Book now](#)

Photo album - 2



double bed(s)

bedroom

pushchair



Interior layout

Interior layout

Surroundings



City



City



City



City



City



view from the kitchen

Advert No. 5926

www.iha.co.za



>> HOLIDAY LETTINGS

BOOK DIRECT WITH THE OWNERS

Holiday lettings
Norte Region (Portugal) - Portugal
"Casa da Serra do Pilar"

7
[Book now](#)

Photo album - 3



City



City



view from the kitchen



the house



the house



bedroom



baby equipment



Culture



bathroom



bathroom



view from the flat



the house

Advert No. 5926

www.iha.co.za



>> HOLIDAY LETTINGS

BOOK DIRECT WITH THE OWNERS

[Theme breaks](#)

Family Holidays

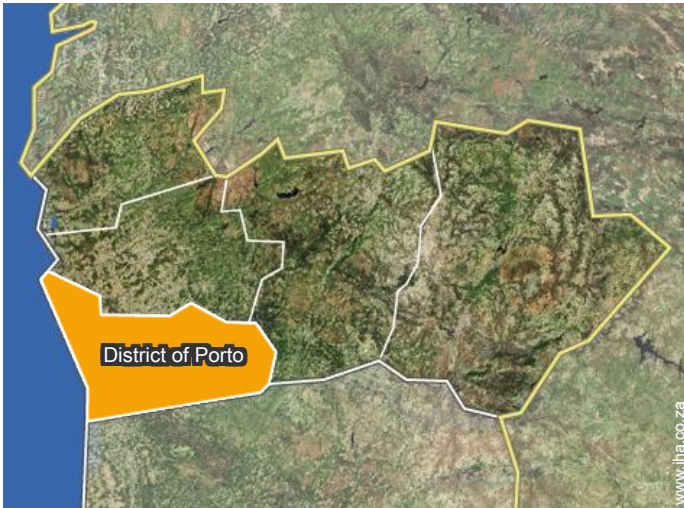
Discover the cultural heritage

Holiday lettings
District of Porto - Norte Region (Portugal)
"Casa da Serra do Pilar"

9

[Book now](#)

Location



Location & Access

" By Metro, 2 minutes distance walking. "



GPS coordinates in degrees, minutes, seconds: Latitude 41°8'15"N - Longitude 8°36'36"W (Dwelling)

Address

→ Calçada da Serra 154
4000 Porto

• Airport Porto Francisco Sá Carneiro

→ Porto, District of Porto, Norte Region (Portugal), Portugal
→ Distance : 25km
→ Time : 30'

• Train station Porto São Bento

→ Porto, District of Porto, Norte Region (Portugal), Portugal
→ Distance : 1km
→ Time : 10'

- Porto : (1km)
- Vila Nova de Gaia : (1,5km)

Contact

Spoken languages



Advert No. 5926

www.iha.co.za



>> HOLIDAY LETTINGS

BOOK DIRECT WITH THE OWNERS

Holiday lettings Porto - Portugal "Casa da Serra do Pilar"

10
[Book now](#)

Availability calendar - from : october 2019

| Oct | Tu | W | Th | F | Sa | Su | M | Tu | W | Th | F | Sa | Su | M | Tu | W | Th | F | Sa | Su | M | Tu | W | Th | | | | | | | |
|------|----|---|----|---|----|----|---|----|---|----|----|----|----|----|----|----|----|----|----|----|----|----|----|----|----|----|----|----|----|----|----|
| 2019 | 1 | 2 | 3 | 4 | 5 | 6 | 7 | 8 | 9 | 10 | 11 | 12 | 13 | 14 | 15 | 16 | 17 | 18 | 19 | 20 | 21 | 22 | 23 | 24 | 25 | 26 | 27 | 28 | 29 | 30 | 31 |
| | | | | | | | | | | | | | | | | - | - | - | - | - | - | - | - | - | - | - | - | - | - | - | |

| Nov | F | Sa | Su | M | Tu | W | Th | F | Sa | Su | M | Tu | W | Th | F | Sa | Su | M | Tu | W | Th | F | Sa | | | | | | | |
|------|---|----|----|---|----|---|----|---|----|----|----|----|----|----|----|----|----|----|----|----|----|----|----|----|----|----|----|----|----|----|
| 2019 | 1 | 2 | 3 | 4 | 5 | 6 | 7 | 8 | 9 | 10 | 11 | 12 | 13 | 14 | 15 | 16 | 17 | 18 | 19 | 20 | 21 | 22 | 23 | 24 | 25 | 26 | 27 | 28 | 29 | 30 |
| | - | - | - | - | - | - | - | - | - | - | - | - | - | - | - | - | - | - | - | - | - | - | - | - | - | - | - | - | - | - |

| Dec | Su | M | Tu | W | Th | F | Sa | Su | M | Tu | W | Th | F | Sa | Su | M | Tu | W | Th | F | Sa | Su | M | Tu | | | | | | | |
|------|----|---|----|---|----|---|----|----|---|----|----|----|----|----|----|----|----|----|----|----|----|----|----|----|----|----|----|----|----|----|----|
| 2019 | 1 | 2 | 3 | 4 | 5 | 6 | 7 | 8 | 9 | 10 | 11 | 12 | 13 | 14 | 15 | 16 | 17 | 18 | 19 | 20 | 21 | 22 | 23 | 24 | 25 | 26 | 27 | 28 | 29 | 30 | 31 |
| | - | - | - | - | - | - | - | - | - | - | - | - | - | - | - | - | - | - | - | - | - | - | - | - | - | - | - | - | - | - | |

| Jan | W | Th | F | Sa | Su | M | Tu | W | Th | F | Sa | Su | M | Tu | W | Th | F | Sa | Su | M | Tu | W | Th | F | | | | | | | |
|------|---|----|---|----|----|---|----|---|----|----|----|----|----|----|----|----|----|----|----|----|----|----|----|----|----|----|----|----|----|----|----|
| 2020 | 1 | 2 | 3 | 4 | 5 | 6 | 7 | 8 | 9 | 10 | 11 | 12 | 13 | 14 | 15 | 16 | 17 | 18 | 19 | 20 | 21 | 22 | 23 | 24 | 25 | 26 | 27 | 28 | 29 | 30 | 31 |
| | - | - | - | - | - | - | - | - | - | - | - | - | - | - | - | - | - | - | - | - | - | - | - | - | - | - | - | - | - | - | |

| Feb | Sa | Su | M | Tu | W | Th | F | Sa | Su | M | Tu | W | Th | F | Sa | Su | M | Tu | W | Th | F | Sa | | | | | | | |
|------|----|----|---|----|---|----|---|----|----|----|----|----|----|----|----|----|----|----|----|----|----|----|----|----|----|----|----|----|----|
| 2020 | 1 | 2 | 3 | 4 | 5 | 6 | 7 | 8 | 9 | 10 | 11 | 12 | 13 | 14 | 15 | 16 | 17 | 18 | 19 | 20 | 21 | 22 | 23 | 24 | 25 | 26 | 27 | 28 | 29 |
| | - | - | - | - | - | - | - | - | - | - | - | - | - | - | - | - | - | - | - | - | - | - | - | - | - | - | - | - | - |

| Mar | Su | M | Tu | W | Th | F | Sa | Su | M | Tu | W | Th | F | Sa | Su | M | Tu | W | Th | F | Sa | Su | M | Tu | | | | | | | |
|------|----|---|----|---|----|---|----|----|---|----|----|----|----|----|----|----|----|----|----|----|----|----|----|----|----|----|----|----|----|----|----|
| 2020 | 1 | 2 | 3 | 4 | 5 | 6 | 7 | 8 | 9 | 10 | 11 | 12 | 13 | 14 | 15 | 16 | 17 | 18 | 19 | 20 | 21 | 22 | 23 | 24 | 25 | 26 | 27 | 28 | 29 | 30 | 31 |
| | - | - | - | - | - | - | - | - | - | - | - | - | - | - | - | - | - | - | - | - | - | - | - | - | - | - | - | - | - | - | |

| Apr | W | Th | F | Sa | Su | M | Tu | W | Th | F | Sa | Su | M | Tu | W | Th | F | Sa | Su | M | Tu | W | Th | | | | | | | |
|------|---|----|---|----|----|---|----|---|----|----|----|----|----|----|----|----|----|----|----|----|----|----|----|----|----|----|----|----|----|----|
| 2020 | 1 | 2 | 3 | 4 | 5 | 6 | 7 | 8 | 9 | 10 | 11 | 12 | 13 | 14 | 15 | 16 | 17 | 18 | 19 | 20 | 21 | 22 | 23 | 24 | 25 | 26 | 27 | 28 | 29 | 30 |
| | - | - | - | - | - | - | - | - | - | - | - | - | - | - | - | - | - | - | - | - | - | - | - | - | - | - | - | - | - | - |

| May | F | Sa | Su | M | Tu | W | Th | F | Sa | Su | M | Tu | W | Th | F | Sa | Su | M | Tu | W | Th | F | Sa | Su | | | | | | | |
|------|---|----|----|---|----|---|----|---|----|----|----|----|----|----|----|----|----|----|----|----|----|----|----|----|----|----|----|----|----|----|----|
| 2020 | 1 | 2 | 3 | 4 | 5 | 6 | 7 | 8 | 9 | 10 | 11 | 12 | 13 | 14 | 15 | 16 | 17 | 18 | 19 | 20 | 21 | 22 | 23 | 24 | 25 | 26 | 27 | 28 | 29 | 30 | 31 |
| | - | - | - | - | - | - | - | - | - | - | - | - | - | - | - | - | - | - | - | - | - | - | - | - | - | - | - | - | - | - | |

| June | M | Tu | W | Th | F | Sa | Su | M | Tu | W | Th | F | Sa | Su | M | Tu | W | Th | F | Sa | Su | M | Tu | | | | | | | |
|------|---|----|---|----|---|----|----|---|----|----|----|----|----|----|----|----|----|----|----|----|----|----|----|----|----|----|----|----|----|----|
| 2020 | 1 | 2 | 3 | 4 | 5 | 6 | 7 | 8 | 9 | 10 | 11 | 12 | 13 | 14 | 15 | 16 | 17 | 18 | 19 | 20 | 21 | 22 | 23 | 24 | 25 | 26 | 27 | 28 | 29 | 30 |
| | - | - | - | - | - | - | - | - | - | - | - | - | - | - | - | - | - | - | - | - | - | - | - | - | - | - | - | - | - | - |

| Jul | W | Th | F | Sa | Su | M | Tu | W | Th | F | Sa | Su | M | Tu | W | Th | F | Sa | Su | M | Tu | W | Th | F | | | | | | | |
|------|---|----|---|----|----|---|----|---|----|----|----|----|----|----|----|----|----|----|----|----|----|----|----|----|----|----|----|----|----|----|----|
| 2020 | 1 | 2 | 3 | 4 | 5 | 6 | 7 | 8 | 9 | 10 | 11 | 12 | 13 | 14 | 15 | 16 | 17 | 18 | 19 | 20 | 21 | 22 | 23 | 24 | 25 | 26 | 27 | 28 | 29 | 30 | 31 |
| | - | - | - | - | - | - | - | - | - | - | - | - | - | - | - | - | - | - | - | - | - | - | - | - | - | - | - | - | - | - | |

Holiday lettings Norte Region (Portugal) - Green Coast "Casa da Serra do Pilar"

11
[Book now](#)


Availability calendar - from : july 2020

| Aug | Sa | Su | M | Tu | W | Th | F | Sa | Su | M | Tu | W | Th | F | Sa | Su | M | Tu | W | Th | F | Sa | Su | M | | | | | | | |
|------|----|----|---|----|---|----|---|----|----|----|----|----|----|----|----|----|----|----|----|----|----|----|----|----|----|----|----|----|----|----|----|
| 2020 | 1 | 2 | 3 | 4 | 5 | 6 | 7 | 8 | 9 | 10 | 11 | 12 | 13 | 14 | 15 | 16 | 17 | 18 | 19 | 20 | 21 | 22 | 23 | 24 | 25 | 26 | 27 | 28 | 29 | 30 | 31 |
| - | - | - | - | - | - | - | - | - | - | - | - | - | - | - | - | - | - | - | - | - | - | - | - | - | - | - | - | - | - | - | |

| Sep | Tu | W | Th | F | Sa | Su | M | Tu | W | Th | F | Sa | Su | M | Tu | W | Th | F | Sa | Su | M | Tu | W | | | | | | | |
|------|----|---|----|---|----|----|---|----|---|----|----|----|----|----|----|----|----|----|----|----|----|----|----|----|----|----|----|----|----|----|
| 2020 | 1 | 2 | 3 | 4 | 5 | 6 | 7 | 8 | 9 | 10 | 11 | 12 | 13 | 14 | 15 | 16 | 17 | 18 | 19 | 20 | 21 | 22 | 23 | 24 | 25 | 26 | 27 | 28 | 29 | 30 |
| - | - | - | - | - | - | - | - | - | - | - | - | - | - | - | - | - | - | - | - | - | - | - | - | - | - | - | - | - | - | |

[Month : Next >>](#)

Rental rates - Flat-Apartments - from 1 to 8 Person(s)

| Rates | Night | Weekend | week | 2 weeks | Month |
|---|-----------------|---------|--------|---------|-------|
|  Low season | R1550* ↓ > 2 | - | R9301* | - | - |
|  Mid season | R1550* ↓ > 2 | - | R9301* | - | - |
|  High season | R1550* ↓ > 2 | - | R9301* | - | - |

↓ Reducing rates > Minimum Night

[Book now](#)

Booking conditions

• Reservation

- Payment made upon reservation : 20% of rental sum
- Payment balance : on handing over the keys
- Deposit required : R1550*

• rentals

- Cleaning charge on departure included

Accepted methods of payment

- Bank transfer (wire) • PayPal • Cash

[▶ Book now](#)

[▶ Contact the owner](#)

Contact directly the property owners

www.iha.co.za

Advert No.

5926

[>> Book now <<](#)

Contact

Spoken languages



* Converted at the rate indicated : €100 = \$110 = £91 = R1550.2

Advert No. 5926

www.iha.co.za



[>> HOLIDAY LETTINGS](#)

BOOK DIRECT WITH THE OWNERS