

# Holiday lettings Lisbon "Orquidea"

T2 Duplex apartment in the center of Lisbon for 5 people. In a quiet hill in the center of Lisboa. Full of light and sun all day long. It has 2 bedroom: 1 bed with a king size bed and a small toilet and 1 bedroom with 2 individual beds.



**Flat-Apartments** 2nd floor, shared entrance, in a(an) House 4 floors

Setting : city, tranquil

Capacity : from 1 to 5 person(s)

Bedroom(s) : 2

Room(s) : 3

Lisbon - District of Lisbon - Lisbon and Tagus Valley  
Portugal

Advert No. 50192

[www.iha.co.za](http://www.iha.co.za)



## Holiday lettings



Flat-Apartments 2nd floor, shared entrance, in a(an) House 4 floors

- **Ideal for all age groups, family**
- **View :** panoramic, unobscured, not overlooked, courtyard, town, rooftop
- **Setting :** city, tranquil
- **Exposure :** South-west

" The landlord will be waiting for you in the apartment in the day of your arrival. There is touristic information in the apartment. It is forbidden to make noise after 23:00. Please, separate the garbage. Respect the neighbours and do not make noise on the building stairs. Smoking is only allowed outside on the balcony. Please leave the apartment in acceptable conditions. It is forbidden to make parties on the apartment. You'll be asked to fill in the Accommodation Bulletin prior to staying in this apartment. The SEF accommodation bulletin is intended to monitor foreign nationals in the country. All foreign citizens, including nationals of other member states of the European Union, must complete an accommodation bulletin when staying in a hotel, tourist resort, local lodging establishment or similar tourist accommodations. "

## Assets

- **baby equipment :**  
Baby changer, playpen

## Surroundings & location



City



Culture

" The apartment is registered with Lisboa Council as a Local lodging 5998&6458AL. Duplex apartment (100 m2) refurbished by architects in a century building. The apartment has 2 floors: 1) On the ground floor there is a big hall that separates the 2 bedrooms, one with a toilet and a double bed and one with 2 single beds. Every rooms has a window and one has a small balcony. 2) On the upper floor you will find the living room with a long balcony and a bathroom and a kitchen. The apartment has plenty of light. The apartment is a century building built after the Earthquake in 1750. It's the perfect choice for those who prefer staying in a quiet area, but still only a few meters away from this vibrant city's epicenter. It's completely furnished with abundant light. It has 2 balconies. The street, typically "lisboeta", is very quiet and safe. "

### Leisure

- **Leisure activities less than 20 km / 12 miles :**  
Bathing

### Surroundings

- **Locality :**  
Sandy beach 15km  
River 3km  
Forest 30km



tv room



living room



dining room

### Exterior

- **Outside accommodation :**  
Terrace 6m<sup>2</sup>, balcony 2m<sup>2</sup>
- **Outside setting :**  
Landscaped garden 50m<sup>2</sup>



interior

### Interior

- **Receive up to :**  
from 1 to 5 person(s) (5 adults)
- **Liveable floor area :**  
100m<sup>2</sup>
- **Interior layout :**  
3 Room(s), 2 bedroom(s), 1 shower room, 2 WC, living room 25m<sup>2</sup>, separate kitchen, dining room, tv room, veranda
- **Sleeps - bed(s) :**  
1 double bed(s), 2 single bed(s), 1 sofa bed (s) 1 pers, 1 baby cot(s)
- **Guest facilities :**  
T.V., hi-fi system, DVD player, t.v points, cable/satellite, internet access, high speed internet access, wifi, cupboard, Hanging wardrobe, radio alarmclock, hair dryer, heated towel rail, mobile cool air fan, electric heating, Curtains, Double glazed, fire alarm
- **Appliances :**  
Crockery/cuttlery, kitchen utensils, electric coffee maker, electric espresso coffee maker, electric kettle, toaster, meat grill, electric cooker, electric hobs, mini-oven, micro-wave oven, refridgerator, freezer, dish washer, washing machine, vacuum cleaner, iron, ironing board

### Services

- **Washing :**  
Sheets, Towels, Linen, Blanket(s), Quilt(s), Pillows
- **House :**  
Cleaning supplement (1 X / per week + R107\*)

### For your guidance

- **For your guidance**  
Children welcome  
Pets accepted under certain conditions (ask the owner)  
Mobile telephone network coverage  
Water : hot/cold  
Local voltage supply : 220-240V / 50Hz  
Electricity supply : mains





Photo album - 1



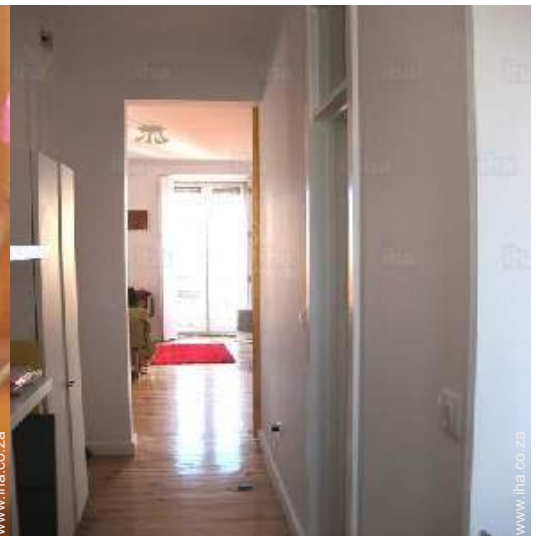
living room



tv room



dining room



interior

Photo album - 2



view from the flat



separate kitchen



view from the kitchen



WC



Interior layout



interior



master bedroom



Photo album - 3



infants bedroom



infants bedroom



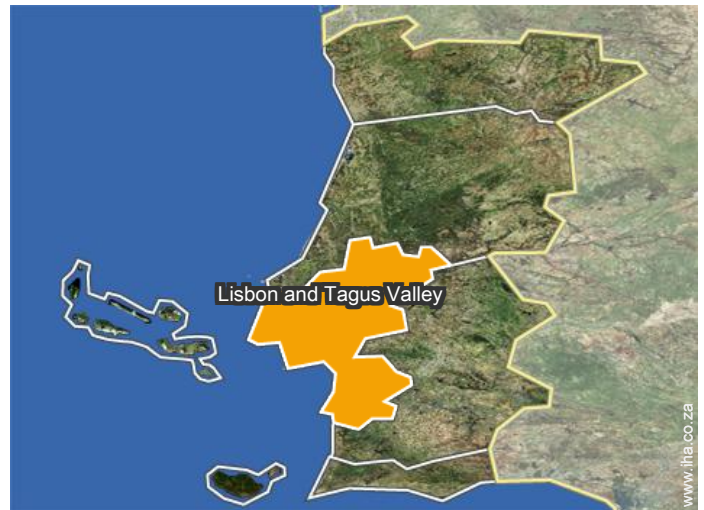
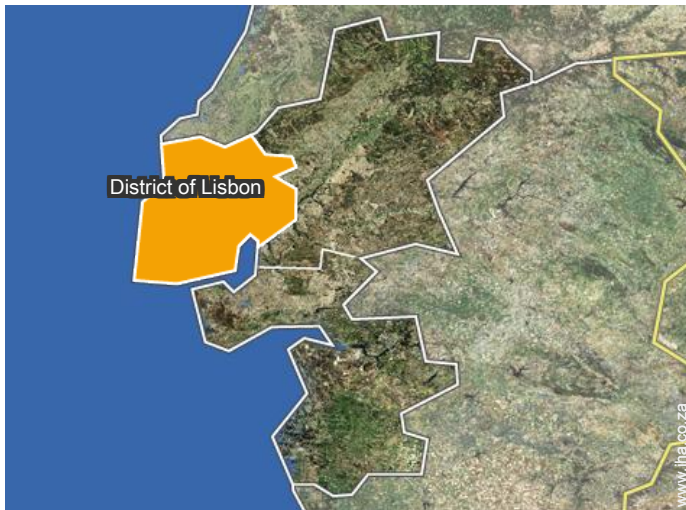
façade



Outside setting




### Location



### Location & Access

" Strategically located at the centre of Lisbon's centre it's only a few steps from glamorous Avenida da Liberdade and walking distance from the city's most popular areas, like Baixa, Chiado, Bairro Alto, Príncipe Real, Castelo and Marquês de Pombal. In August you will be able to go to the artificial beach in Jardim do Torel, 5 minuts from the apartment and with a beautiful view of Lisboa. The subway station "Avenida" is at the bottom of the street. "

 GPS coordinates in degrees, minutes, seconds: Latitude 38°43'16"N - Longitude 9° 8'36"W ([Dwelling](#))

#### Address

→ Rua da Caridade, n 7 - 3 Dto  
1000 Lisbon

#### • Airport Lisbon Portela

→ Lisbon, District of Lisbon, Lisbon and Tagus Valley, Portugal  
→ Distance : 7,5km  
→ Time : 20'

#### • Train station Lisboa Cais do Sodré

→ Lisbon, District of Lisbon, Lisbon and Tagus Valley, Portugal  
→ Distance : 2km

→ Time : 30'

#### • Train station Lisboa Rossio

→ Lisbon, District of Lisbon, Lisbon and Tagus Valley, Portugal  
→ Distance : 200m  
→ Time : 5'

- Lisbon : (1km)
- Sintra : (30km)
- Cascais : (25km)

### Contact

Spoken languages



# Holiday lettings District of Lisbon - Lisbon and Tagus Valley "Orquidea"

## Availability calendar - from : january 2018

Jan	M	Tu	W	Th	F	Sa	Su	M	Tu	W	Th	F	Sa	Su	M	Tu	W	Th	F	Sa	Su	M	Tu	W	Th	F	Sa	Su	M	Tu	W			
2018	1	2	3	4	5	6	7	8	9	10	11	12	13	14	15	16	17	18	19	20	21	22	23	24	25	26	27	28	29	30	31			

Feb	Th	F	Sa	Su	M	Tu	W	Th	F	Sa	Su	M	Tu	W	Th	F	Sa	Su	M	Tu	W										
2018	1	2	3	4	5	6	7	8	9	10	11	12	13	14	15	16	17	18	19	20	21	22	23	24	25	26	27	28			

Mar	Th	F	Sa	Su	M	Tu	W	Th	F	Sa	Su	M	Tu	W	Th	F	Sa	Su	M	Tu	W	Th	F	Sa							
2018	1	2	3	4	5	6	7	8	9	10	11	12	13	14	15	16	17	18	19	20	21	22	23	24	25	26	27	28	29	30	31

Apr	Su	M	Tu	W	Th	F	Sa	Su	M	Tu	W	Th	F	Sa	Su	M	Tu	W	Th	F	Sa	Su	M							
2018	1	2	3	4	5	6	7	8	9	10	11	12	13	14	15	16	17	18	19	20	21	22	23	24	25	26	27	28	29	30

May	Tu	W	Th	F	Sa	Su	M	Tu	W	Th	F	Sa	Su	M	Tu	W	Th	F	Sa	Su	M	Tu	W	Th							
2018	1	2	3	4	5	6	7	8	9	10	11	12	13	14	15	16	17	18	19	20	21	22	23	24	25	26	27	28	29	30	31

June	F	Sa	Su	M	Tu	W	Th	F	Sa	Su	M	Tu	W	Th	F	Sa	Su	M	Tu	W	Th	F	Sa							
2018	1	2	3	4	5	6	7	8	9	10	11	12	13	14	15	16	17	18	19	20	21	22	23	24	25	26	27	28	29	30

Jul	Su	M	Tu	W	Th	F	Sa	Su	M	Tu	W	Th	F	Sa	Su	M	Tu	W	Th	F	Sa	Su	M	Tu							
2018	1	2	3	4	5	6	7	8	9	10	11	12	13	14	15	16	17	18	19	20	21	22	23	24	25	26	27	28	29	30	31

Aug	W	Th	F	Sa	Su	M	Tu	W	Th	F	Sa	Su	M	Tu	W	Th	F	Sa	Su	M	Tu	W	Th	F							
2018	1	2	3	4	5	6	7	8	9	10	11	12	13	14	15	16	17	18	19	20	21	22	23	24	25	26	27	28	29	30	31

Sep	Sa	Su	M	Tu	W	Th	F	Sa	Su	M	Tu	W	Th	F	Sa	Su	M	Tu	W	Th	F	Sa	Su								
2018	1	2	3	4	5	6	7	8	9	10	11	12	13	14	15	16	17	18	19	20	21	22	23	24	25	26	27	28	29	30	

Oct	M	Tu	W	Th	F	Sa	Su	M	Tu	W	Th	F	Sa	Su	M	Tu	W	Th	F	Sa	Su	M	Tu	W							
2018	1	2	3	4	5	6	7	8	9	10	11	12	13	14	15	16	17	18	19	20	21	22	23	24	25	26	27	28	29	30	31

 Reserved       Low season





# Holiday lettings Lisbon - Portugal "Orquidea"

9

[Book now](#)

## Availability calendar - from : october 2018

Nov	Th	F	Sa	Su	M	Tu	W	Th	F	Sa	Su	M	Tu	W	Th	F	Sa	Su	M	Tu	W	Th	F							
2018	1	2	3	4	5	6	7	8	9	10	11	12	13	14	15	16	17	18	19	20	21	22	23	24	25	26	27	28	29	30
	-	-	-	-	-	-	-	-	-	-	-	-	-	-	-	-	-	-	-	-	-	-	-	-	-	-	-	-	-	

Dec	Sa	Su	M	Tu	W	Th	F	Sa	Su	M	Tu	W	Th	F	Sa	Su	M	Tu	W	Th	F	Sa	Su	M							
2018	1	2	3	4	5	6	7	8	9	10	11	12	13	14	15	16	17	18	19	20	21	22	23	24	25	26	27	28	29	30	31
	-	-	-	-	-	-	-	-	-	-	-	-	-	-	-	-	-	-	-	-	-	-	-	-	-	-	-	-	-		



Reserved



Low season

[Month : Next >>](#)

## Rental rates - Flat-Apartments - from 1 to 5 Person(s)

Rates	Night	Weekend	week	2 weeks	Month
Low season	R993* > 3	-	-	-	-
Mid season	R1146* > 3	-	-	-	-
High season	R1299* > 3	-	-	-	-

> Minimum Night

[Book now](#)

### Booking conditions

#### • Reservation

- Payment made upon reservation : 20% of rental sum
- Payment balance : on handing over the keys
- Deposit required : R2292\*

#### • rentals

- Service charges included
- Day tax included
- Cleaning charge levy on departure : R382\*

[▶ Book now](#)

[▶ Contact the owner](#)

### Accepted methods of payment

- Bank transfer (wire)
- PayPal
- Cash

Contact directly the property owners

[www.iha.co.za](http://www.iha.co.za)

Advert No.

50192

[>> Book now <<](#)

### Contact

Spoken languages



\* Converted at the rate indicated : €100 = \$117.29 = £89.59 = R1527.84

Advert No. 50192

[www.iha.co.za](http://www.iha.co.za)



[>> HOLIDAY LETTINGS](#)

[BOOK DIRECT WITH THE OWNERS](#)