

# Gîte - Self Catering Gravier Charming Creole House



Gîte - Self Catering - Charming Creole House, detached, single storey, separate entrance, in a(an) Charming Property

Setting : quiet, waterfront

Capacity : 30 person(s)

Bedroom(s) : 14

Room(s) : 14



Eco-tourisme

Gravier - Rodrigues Island

Mauritius

Advert No. 8966

[www.iha.co.za](http://www.iha.co.za)



>> HOLIDAY LETTINGS

BOOK DIRECT WITH THE OWNERS

### Gîte - Self Catering



Gîte - Self Catering - Charming Creole House, detached, single storey, separate entrance, in a(an) Charming Property

- View : panoramic, not overlooked, dominant, sea/ocean, swimming pool, garden/park
- Setting : quiet, waterfront
- Exposure : South-east

### Assets

#### • Swimming pool :

Shared swimming pool, rectangular (length 5m, width 2m), sea water, illuminated, child secure (open from '01 january' till '31 december')

#### • Parking :

Parking uncovered : off road.

#### • Advantages :

Jacuzzi, massage table, pétanque pitch, 1 pétanque set(s), 2 snorkelling equipment, 4X4 vehicle, motor boat, sailing boat

#### • baby equipment :

Playpen

#### Benefits :

Direct access to the beach

### Surroundings & location



Seaside



Fishing



Culture

#### Leisure

- Leisure activities less than 20 km / 12 miles :

Bathing, snorkelling, scuba diving, scuba diving (Standard diving dress), windsurfing, sailing, kite surfing, canoeing, tennis, coastal/forest paths, hiking, climbing, mountain bike (path), kite flying, boat trips, fishing, deep-sea angling, angling, pétanque pitch

- Supervised :

Dive school, tennis school

- Attractions and relaxation :

Bar/pub, discotheque, restaurant, karaoke, park and garden, sea world, nature reserve, local craftshop, casino, health farm, beauticians, fitness centre, Bio farm

#### Surroundings

- Locality :

Sea/ocean  
Sandy beach <50m  
Surfing spots  
Watersports centre

- Amenities :

Nursery  
Village centre  
Bus stop / bus station  
Bike/mountain bike hire  
Scooter/motorbike hire  
Car rental  
Boat rental  
Scuba diving material hire 3km  
Breadshop  
Local shops 1,5km  
Hairdressing salon 5km  
Internet cafe 5km  
Post office 5km  
Bank 10km  
Cash point 7,5km  
Chemist 7,5km  
Doctor 7,5km  
Nurse <50m  
Hospital 7,5km  
Dispensing clinic 4km



master bedroom



bedroom



view from the dining-room

## Interior

- **Receive up to :**

30 person(s)

- **Liveable floor area :**

600m<sup>2</sup>

- **Interior layout :**

14 Room(s), 14 bedroom(s), 14 bathroom, 14 WC, living room 40m<sup>2</sup>, sitting room 35m<sup>2</sup>, shared kitchen facilities, dining room, dining area, tv room, bar area, reading room, reception hall, study, veranda

- **Sleeps - bed(s) :**

12 double bed(s), 6 single bed(s), 1 baby cot (s), 2 camp bed(s), 2 possible extra bed(s)

- **Guest facilities :**

T.V., videoplayer, DVD player, board games, book collection, film collection, telephone, computer, cable/satelite, internet access, cupboard, Hanging wardrobe, safe deposit box, mosquito nets, ceiling paddle fan, Glazed in area, Curtains, Rolling shutters

- **Appliances :**

Cafetiere, electric coffee maker, electric kettle, toaster, gas cooker, refridgerator, freezer, iron

## Exterior

- **Ground surface :**

2 ha

- **Outside accommodation :**

Terrace 8m<sup>2</sup>, covered terrace 9m<sup>2</sup>, roof terrace 7m<sup>2</sup>, balcony 6m<sup>2</sup>, sunhouse 5m<sup>2</sup>, gazebo, garden shed

- **Outside setting :**

Private courtyard, enclosed grounds, garden, landscaped garden, tropical garden, lawn, wooded park, orchard, kitchen garden 20m<sup>2</sup>

- **Outside amenities :**

Summer kitchen, summer living area, outside bar, BBQ, garden table(s), 10 garden seat(s), arbour, parasol, garden seated area, 14 chaise(s) longue(s), 2 hammock(s)



garden/park view

## Services

- **Washing :**

Sheets (1 X / per week), Towels (3 X / per week), Linen (2 X / per week), Blanket(s) (1 X / per week), Quilt(s) (1 X / per week), Pillows (1 X / per week)

- **House :**

Cleaning (7 X / per week), Cleaning on departure, Garden/swimming pool maintenance, Parking, Airport transfers supplement (+ R310\*)

- **Personnel :**

Staff, Chef(s), Chauffeur supplement (+ R186\*), Laundry supplement (+R155\*), Baby sitting supplement (+R155\*), Massage supplement (+R388\*), Guide supplement (+ R186\*), Entertainer supplement (+R186\*)

- **Restauration :**

Breakfast, Guest table supplement (7 X / per week +R186\*), BBQ meal supplement (1 X / per week +R186\*), Half board, Full board supplement, Locally produced meals supplement (1 X / per week), Picnic basket supplement (7 X / per week +R78\*)

## For your guidance

- **For your guidance**

Children welcome  
Mobile telephone network coverage  
Water : hot/cold  
Local voltage supply : 220V / 60Hz

- **Handicapped people welcome**

Wheelchair access  
Fitted out for the disabled : mobility



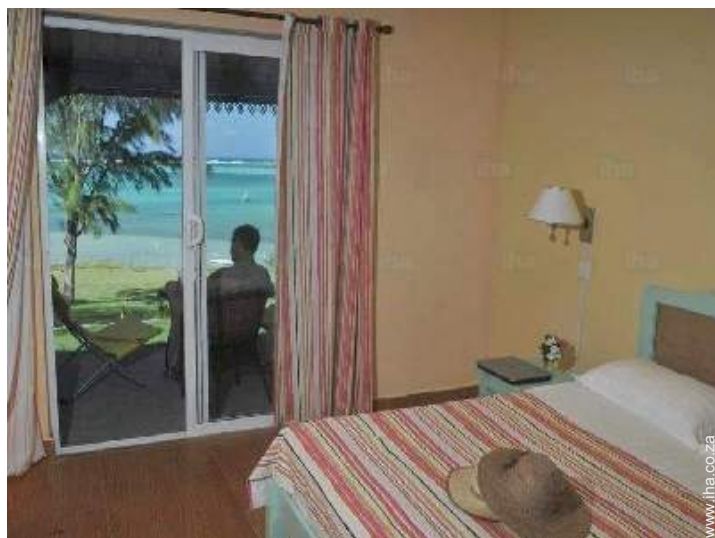
pool view



Photo album - 1



bedroom



master bedroom



view from the dining-room



pool view



garden/park view



Photo album - 2



view from the swimming pool



view over the sea



sea view



view from the swimming pool

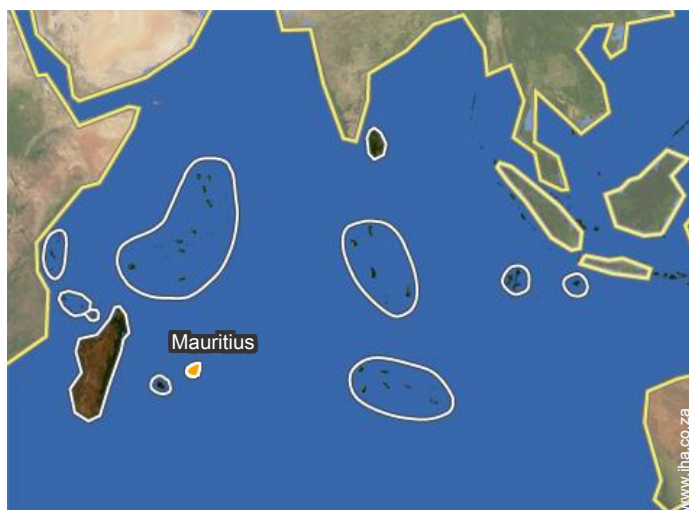
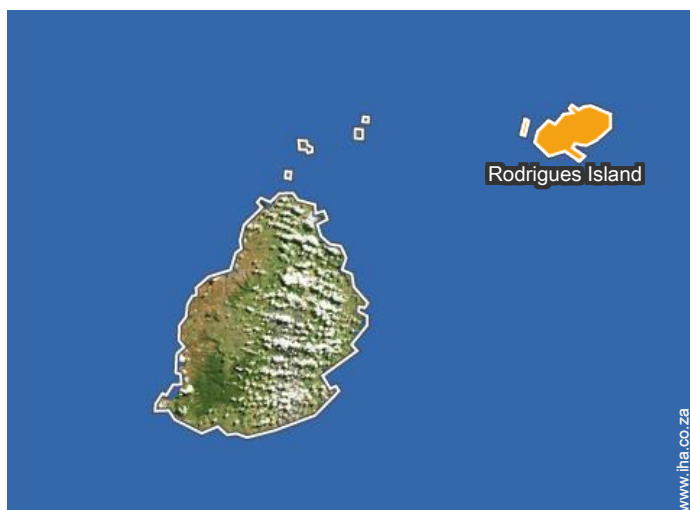


massage table



Summer

### Location



### Location & Access



GPS coordinates in degrees, minutes, seconds: Latitude 19°43'28"S - Longitude 63°29'16"E ([Dwelling](#))

#### Address

→ 230 Gravier

#### • Airport Sir Gaetan Duval

→ Plaine Corail, Rodrigues Island,  
Mauritius

→ Distance : 15km

→ Time : 45'

#### • Coach station Plaine Corail

→ Plaine Corail, Rodrigues Island,  
Mauritius

→ Distance : 15km

→ Time : 45'

• Gravier : (1km)

• Port South East : (4km)

• Saint-Francois : (5km)

### Contact

Spoken  
languages



Gîte - Self Catering  
Rodrigues Island - Gravier  
**Charming Creole House**

[Book now](#)

Availability calendar - from : june 2019

June	Sa	Su	M	Tu	W	Th	F	Sa	Su	M	Tu	W	Th	F	Sa	Su	M	Tu	W	Th	F	Sa	Su	M	Tu	W	Th	F	Sa	Su
2019	1	2	3	4	5	6	7	8	9	10	11	12	13	14	15	16	17	18	19	20	21	22	23	24	25	26	27	28	29	30
																	-	-	-	-	-	-	-	-	-	-	-	-	-	-

Jul	M	Tu	W	Th	F	Sa	Su	M	Tu	W	Th	F	Sa	Su	M	Tu	W	Th	F	Sa	Su	M	Tu	W	Th	F	Sa	Su	M	Tu	W
2019	1	2	3	4	5	6	7	8	9	10	11	12	13	14	15	16	17	18	19	20	21	22	23	24	25	26	27	28	29	30	31
	-	-	-	-	-	-	-	-	-	-	-	-	-	-	-	-	-	-	-	-	-	-	-	-	-	-	-	-	-	-	-

Aug	Th	F	Sa	Su	M	Tu	W	Th	F	Sa	Su	M	Tu	W	Th	F	Sa	Su	M	Tu	W	Th	F	Sa	Su	M	Tu	W	Th	F	Sa
2019	1	2	3	4	5	6	7	8	9	10	11	12	13	14	15	16	17	18	19	20	21	22	23	24	25	26	27	28	29	30	31
	-	-	-	-	-	-	-	-	-	-	-	-	-	-	-	-	-	-	-	-	-	-	-	-	-	-	-	-	-	-	-

Sep	Su	M	Tu	W	Th	F	Sa	Su	M	Tu	W	Th	F	Sa	Su	M	Tu	W	Th	F	Sa	Su	M	Tu	W	Th	F	Sa	Su	M
2019	1	2	3	4	5	6	7	8	9	10	11	12	13	14	15	16	17	18	19	20	21	22	23	24	25	26	27	28	29	30
	-	-	-	-	-	-	-	-	-	-	-	-	-	-	-	-	-	-	-	-	-	-	-	-	-	-	-	-	-	-

Oct	Tu	W	Th	F	Sa	Su	M	Tu	W	Th	F	Sa	Su	M	Tu	W	Th	F	Sa	Su	M	Tu	W	Th	F	Sa	Su	M	Tu	W	Th
2019	1	2	3	4	5	6	7	8	9	10	11	12	13	14	15	16	17	18	19	20	21	22	23	24	25	26	27	28	29	30	31
	-	-	-	-	-	-	-	-	-	-	-	-	-	-	-	-	-	-	-	-	-	-	-	-	-	-	-	-	-	-	-

Nov	F	Sa	Su	M	Tu	W	Th	F	Sa	Su	M	Tu	W	Th	F	Sa	Su	M	Tu	W	Th	F	Sa	Su	M	Tu	W	Th	F	Sa
2019	1	2	3	4	5	6	7	8	9	10	11	12	13	14	15	16	17	18	19	20	21	22	23	24	25	26	27	28	29	30
	-	-	-	-	-	-	-	-	-	-	-	-	-	-	-	-	-	-	-	-	-	-	-	-	-	-	-	-	-	-

Dec	Su	M	Tu	W	Th	F	Sa	Su	M	Tu	W	Th	F	Sa	Su	M	Tu	W	Th	F	Sa	Su	M	Tu	W	Th	F	Sa	Su	M	Tu
2019	1	2	3	4	5	6	7	8	9	10	11	12	13	14	15	16	17	18	19	20	21	22	23	24	25	26	27	28	29	30	31
	-	-	-	-	-	-	-	-	-	-	-	-	-	-	-	-	-	-	-	-	-	-	-	-	-	-	-	-	-	-	-

Jan	W	Th	F	Sa	Su	M	Tu	W	Th	F	Sa	Su	M	Tu	W	Th	F	Sa	Su	M	Tu	W	Th	F	Sa	Su	M	Tu	W	Th	F
2020	1	2	3	4	5	6	7	8	9	10	11	12	13	14	15	16	17	18	19	20	21	22	23	24	25	26	27	28	29	30	31
	-	-	-	-	-	-	-	-	-	-	-	-	-	-	-	-	-	-	-	-	-	-	-	-	-	-	-	-	-	-	-

Feb	Sa	Su	M	Tu	W	Th	F	Sa	Su	M	Tu	W	Th	F	Sa	Su	M	Tu	W	Th	F	Sa	Su						
2020	1	2	3	4	5	6	7	8	9	10	11	12	13	14	15	16	17	18	19	20	21	22	23	24	25	26	27	28	29
	-	-	-	-	-	-	-	-	-	-	-	-	-	-	-	-	-	-	-	-	-	-	-	-					

Mar	Su	M	Tu	W	Th	F	Sa	Su	M	Tu	W	Th	F	Sa	Su	M	Tu	W	Th	F	Sa	Su	M	Tu							
2020	1	2	3	4	5	6	7	8	9	10	11	12	13	14	15	16	17	18	19	20	21	22	23	24	25	26	27	28	29	30	31
	-	-	-	-	-	-	-	-	-	-	-	-	-	-	-	-	-	-	-	-	-	-	-	-	-	-	-	-	-	-	





Availability calendar - from : march 2020

Apr	W	Th	F	Sa	Su	M	Tu	W	Th	F	Sa	Su	M	Tu	W	Th	F	Sa	Su	M	Tu	W	Th	F	Sa	Su	M	Tu	W	Th
2020	1	2	3	4	5	6	7	8	9	10	11	12	13	14	15	16	17	18	19	20	21	22	23	24	25	26	27	28	29	30
-	-	-	-	-	-	-	-	-	-	-	-	-	-	-	-	-	-	-	-	-	-	-	-	-	-	-	-	-	-	-

May	F	Sa	Su	M	Tu	W	Th	F	Sa	Su	M	Tu	W	Th	F	Sa	Su	M	Tu	W	Th	F	Sa	Su							
2020	1	2	3	4	5	6	7	8	9	10	11	12	13	14	15	16	17	18	19	20	21	22	23	24	25	26	27	28	29	30	31
-	-	-	-	-	-	-	-	-	-	-	-	-	-	-	-	-	-	-	-	-	-	-	-	-	-	-	-	-	-	-	

Month : Next >>



bedroom



master bedroom

Booking conditions

• Reservation

→ Payment made upon reservation : 30% of rental sum

• rentals

- Service charges included
- Day tax included
- Cleaning charge on departure included
- Anticipated supplement for : - supplementary bed(s)

Accepted methods of payment

- Bank transfer (wire) • Cash

Contact

Spoken languages



► Book now

► Contact the owner

Contact directly the property owners

[www.iha.co.za](http://www.iha.co.za)

Advert No.

8966

>> Book now <<